



Avison Young - Raleigh-Durham | 5440 Wade Park Boulevard, Suite 200 | Raleigh, NC 27607

© 2023. Avison Young. Information contained herein was obtained from sources deemed reliable and, while thought to be correct, have not been verified. Avison Young does not guarantee the accuracy or completeness of the information presented, nor assumes any responsibility or liability for any errors or omissions therein.

**OFFICE SPACE FOR LEASE**

# 100 Europa Drive

100 Europa Drive, Chapel Hill, NC 27517

**AVISON  
YOUNG**

# Office space for lease

100 Europa Drive



Lease Rate	\$23.95/SF, Full Service
------------	--------------------------

## Summary

Building Size:	183,164 SF
Available SF:	1,514 - 11,728 SF
Type:	Class A Office Building
County:	Orange
Location:	Directly off 15-501/ Europa Drive and less than one mile from I-40

## Property Overview

The Europa Center is a five-story, Class A office building located directly off highway 15-501. It provides convenient access to Downtown Chapel Hill and Durham and is minutes from UNC at Chapel Hill and I-40. This business park offers tenants an array of amenities which include: an on-site café, fitness classes, loading dock with service elevator, tri-level covered parking deck, three-story atrium lobby, lush interior landscape, outside patio seating with wi-fi access, 24/7 building access, security and on-site property management and maintenance.



AVISON  
YOUNG

Gary Hill, CCIM

Senior Associate, Sales & Leasing

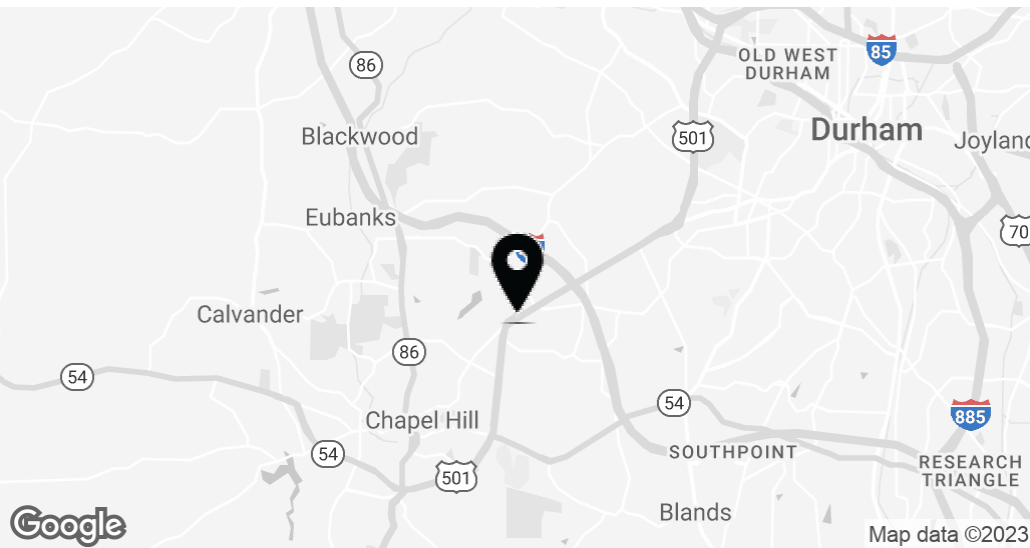
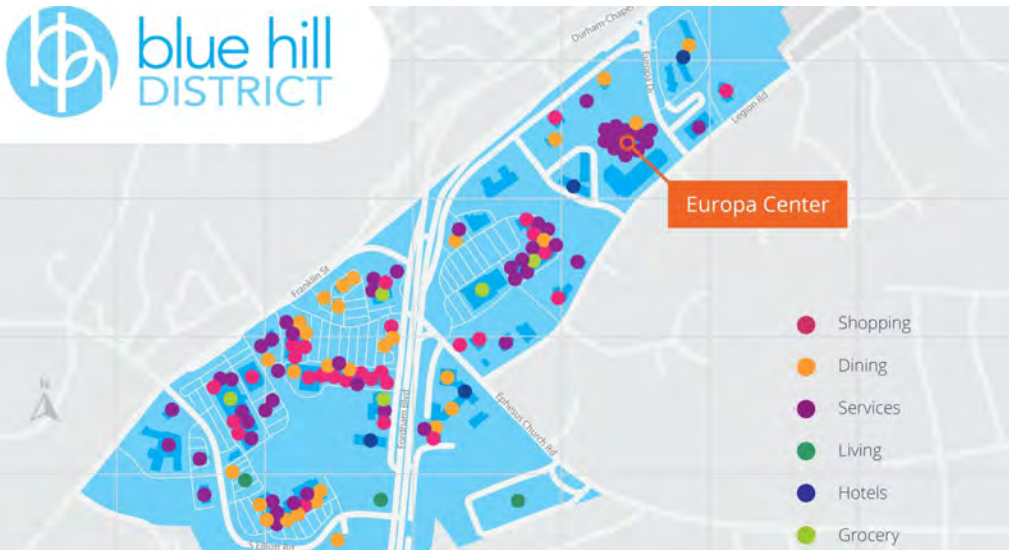
D 919 913 1116

gary.hill@avisonyoung.com



# Office space for lease

100 Europa Drive



## Location

This property is located off Hwy 15-501 and Europa Drive; adjacent to The Sheraton Hotel, 0.25 miles to Wegmans, 3 miles to UNC at Chapel Hill and 18 miles to the Raleigh-Durham International Airport

Demographics	1 Mile	3 Miles	5 Miles
Total Households	3,722	22,640	55,231
Total Population	9,319	57,683	131,113
Average HH Income	\$91,186	\$108,092	\$103,913

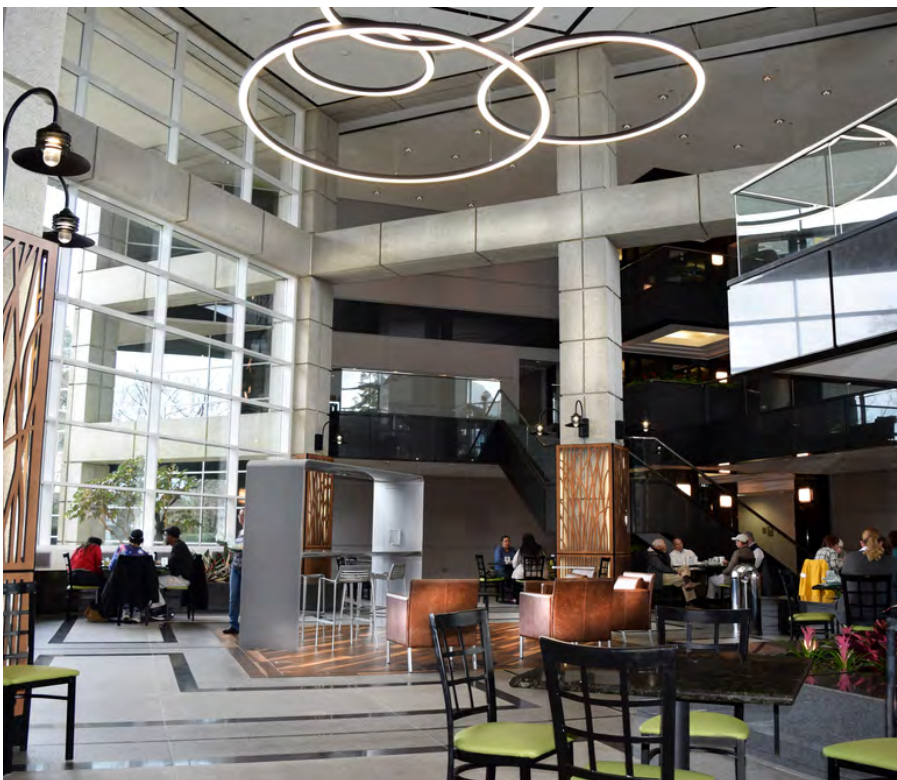
**AVISON YOUNG**  
**Gary Hill, CCIM**  
Senior Associate, Sales & Leasing  
D 919 913 1116  
gary.hill@avisonyoung.com



AVISON  
YOUNG



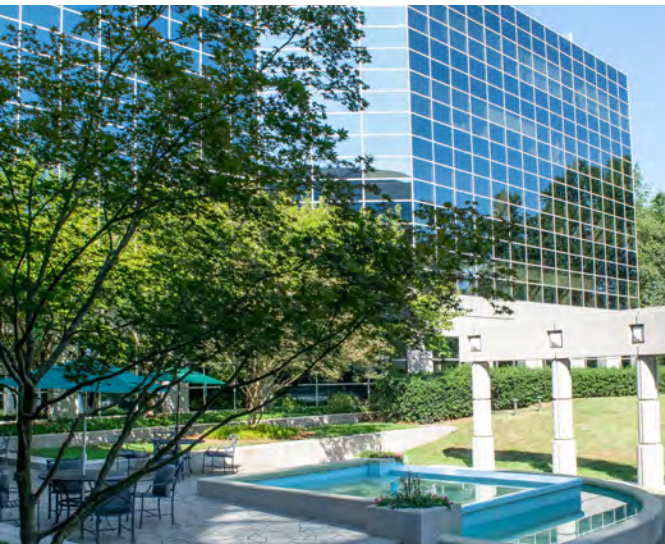
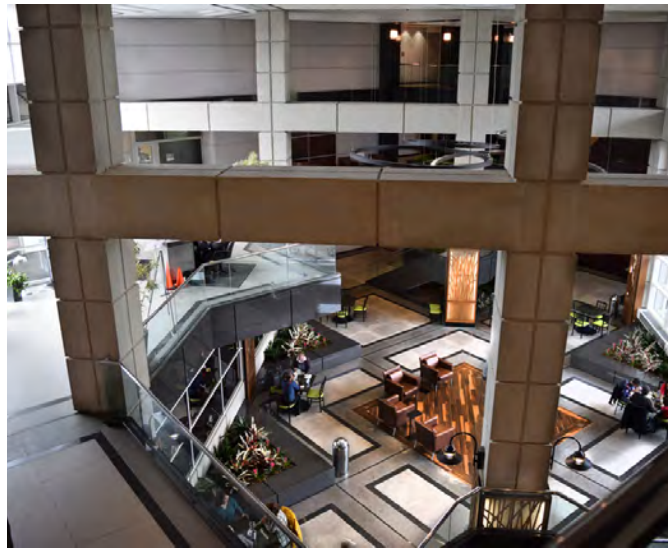
Gallery





## Office space for lease

100 Europa Drive



**AVISON  
YOUNG**

**Gary Hill, CCIM**

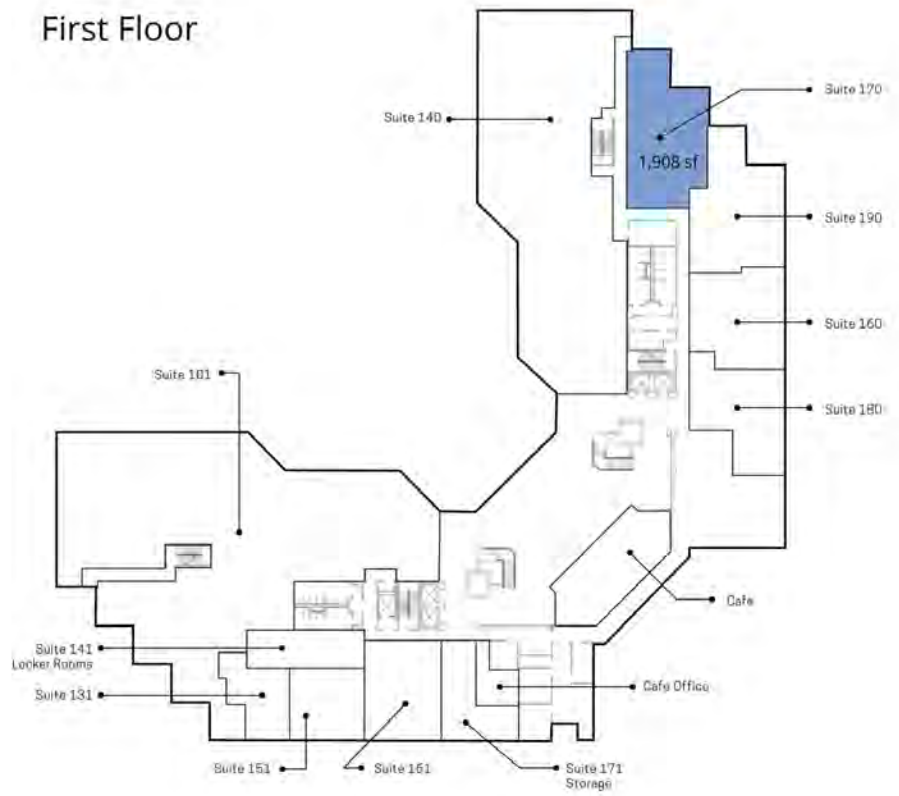
Senior Associate, Sales & Leasing

D 919 913 1116

[gary.hill@avisonyoung.com](mailto:gary.hill@avisonyoung.com)

Avison Young - Raleigh-Durham | 5440 Wade Park Boulevard, Suite 200 | Raleigh, NC 27607

© 2023, Avison Young - Raleigh-Durham. Information contained herein was obtained from sources deemed reliable and, while thought to be correct, have not been verified. Avison Young - Raleigh-Durham does not guarantee the accuracy or completeness of the information presented, nor assumes any responsibility or liability for any errors or omissions therein.



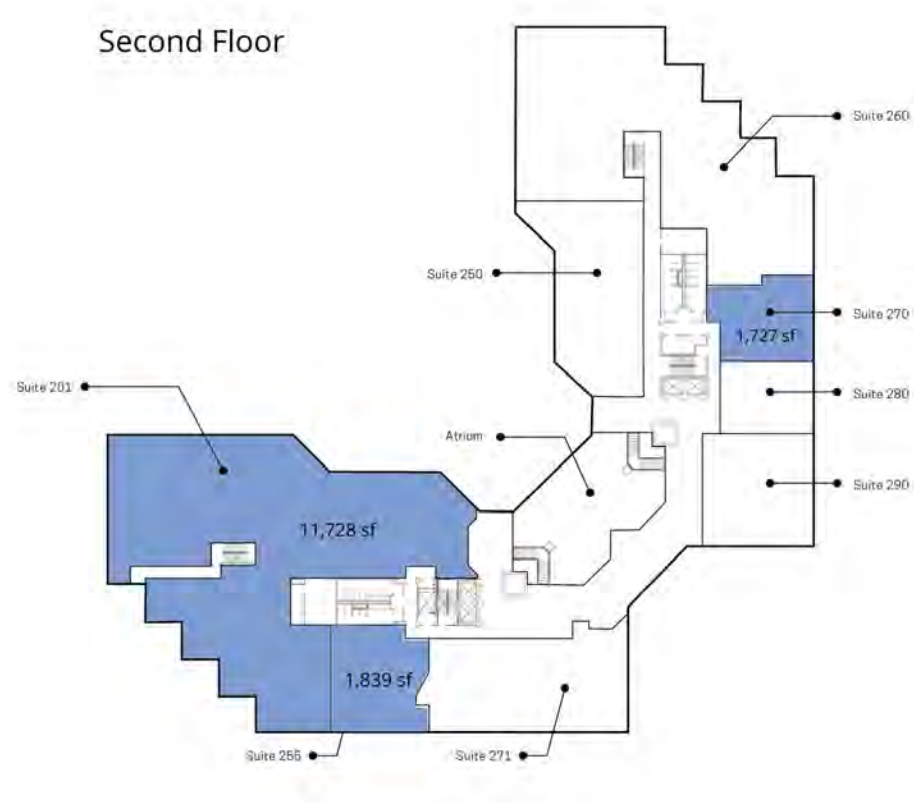
Lease Information

Lease Type:	Full Service	Lease Term:	Negotiable
Total Space:	1,908 SF	Lease Rate:	\$23.95 SF/yr

AVISON  
YOUNG

**Gary Hill, CCIM**  
Senior Associate, Sales & Leasing  
D 919 913 1116  
gary.hill@avisonyoung.com



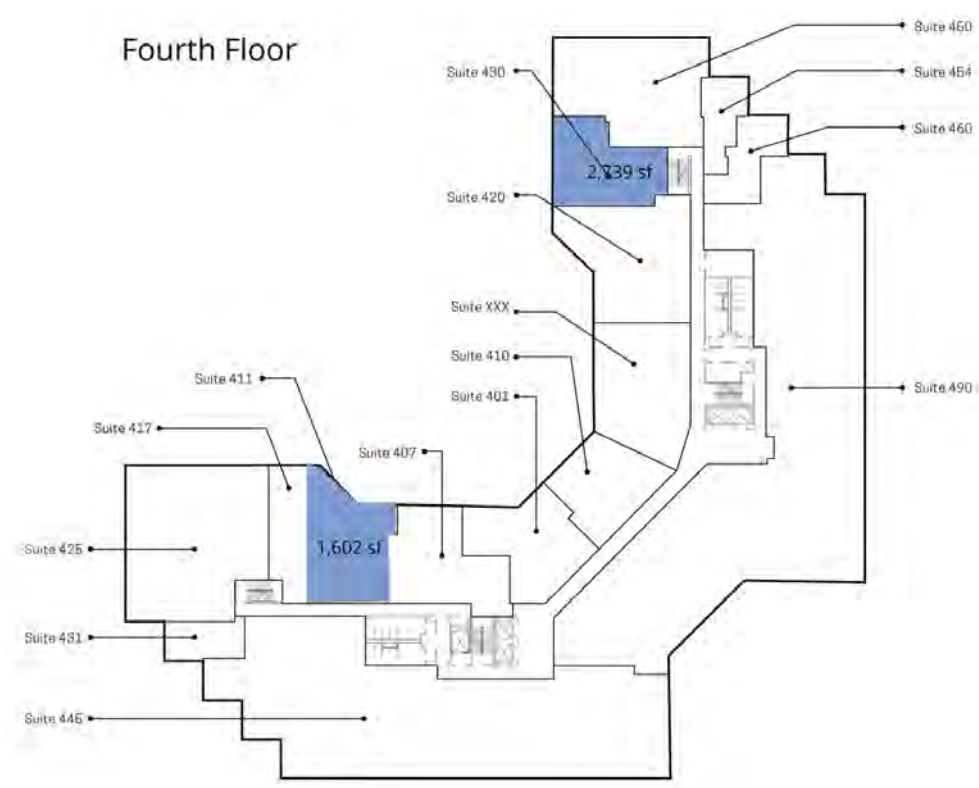


Lease Information

Lease Type:	Full Service	Lease Term:	Negotiable
Total Space:	1,727 - 11,728 SF	Lease Rate:	\$23.95 SF/yr

**AVISON  
YOUNG**

**Gary Hill, CCIM**  
Senior Associate, Sales & Leasing  
D 919 913 1116  
gary.hill@avisonyoung.com



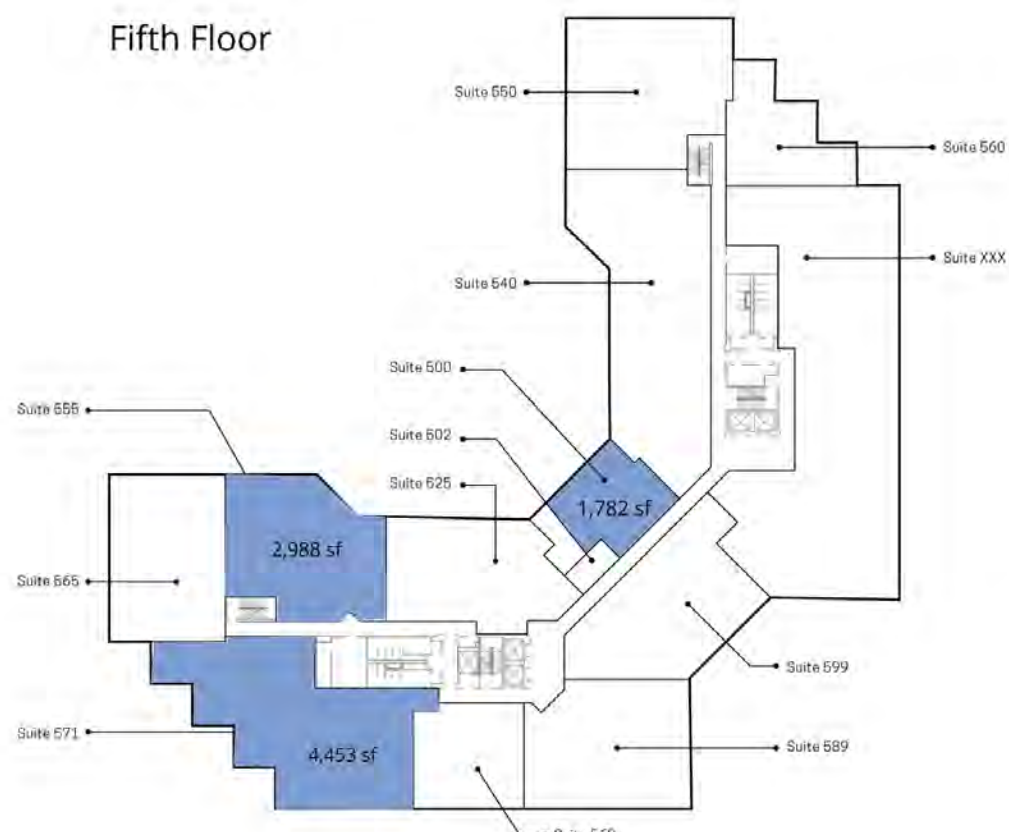
Lease Information

Lease Type:	Full Service	Lease Term:	Negotiable
Total Space:	1,602 - 2,739 SF	Lease Rate:	\$23.95 SF/yr

**AVISON  
YOUNG**

**Gary Hill, CCIM**  
Senior Associate, Sales & Leasing  
D 919 913 1116  
gary.hill@avisonyoung.com





Lease Information

Lease Type:	Full Service	Lease Term:	Negotiable
Total Space:	848 - 2,739 SF	Lease Rate:	\$23.95 SF/yr

**AVISON  
YOUNG**  
**Gary Hill, CCIM**  
Senior Associate, Sales & Leasing  
D 919 913 1116  
gary.hill@avisonyoung.com



# Let's talk.

**Gary Hill, CCIM**

Senior Associate, Sales & Leasing

D 919 913 1116

[gary.hill@avisonyoung.com](mailto:gary.hill@avisonyoung.com)



EUROPA CENTER

Avison Young - Raleigh-Durham  
5440 Wade Park Boulevard, Suite 200 | Raleigh, NC 27607

© 2023. Avison Young - Raleigh-Durham. Information contained herein was obtained from sources deemed reliable and, while thought to be correct, have not been verified. Avison Young - Raleigh-Durham does not guarantee the accuracy or completeness of the information presented, nor assumes any responsibility or liability for any errors or omissions therein.

---

**AVISON  
YOUNG**

---