



Avison Young - Raleigh-Durham | 5440 Wade Park Boulevard, Suite 200 | Raleigh, NC 27607

CLASS A OFFICE SPACE FOR LEASE

Europa Center

100 Europa Drive, Chapel Hill, NC 27517

**AVISON
YOUNG**

Property highlights

Overview

The Europa Center is a five-story, Class A office building located directly off Highway 15-501. It provides convenient access to Downtown Chapel Hill and Durham and is minutes from UNC at Chapel Hill and I-40. This business park offers tenants an array of amenities which include: an on-site café, fully equipped fitness facility, loading dock with service elevator, tri-level covered parking deck, three-story atrium lobby, lush interior landscape, outside patio seating with wi-fi access, 24/7 building access, security and on-site property management and maintenance.



Summary

Lease Rate:	\$24.95/sf, Full Service
-------------	--------------------------

Available:	1,839 - 13,567 sf
------------	-------------------

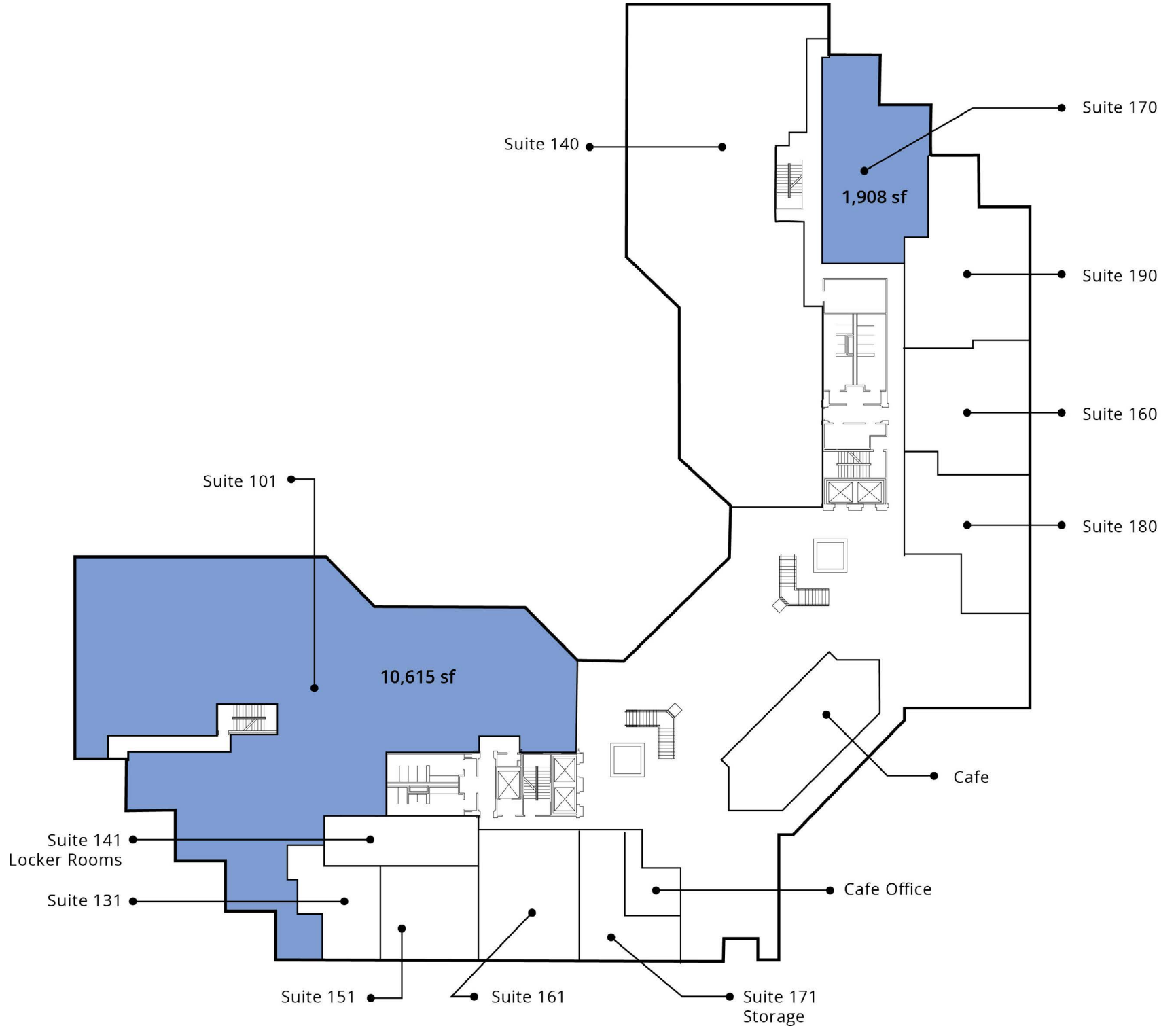
Building Size:	183,164 sf
----------------	------------

Location

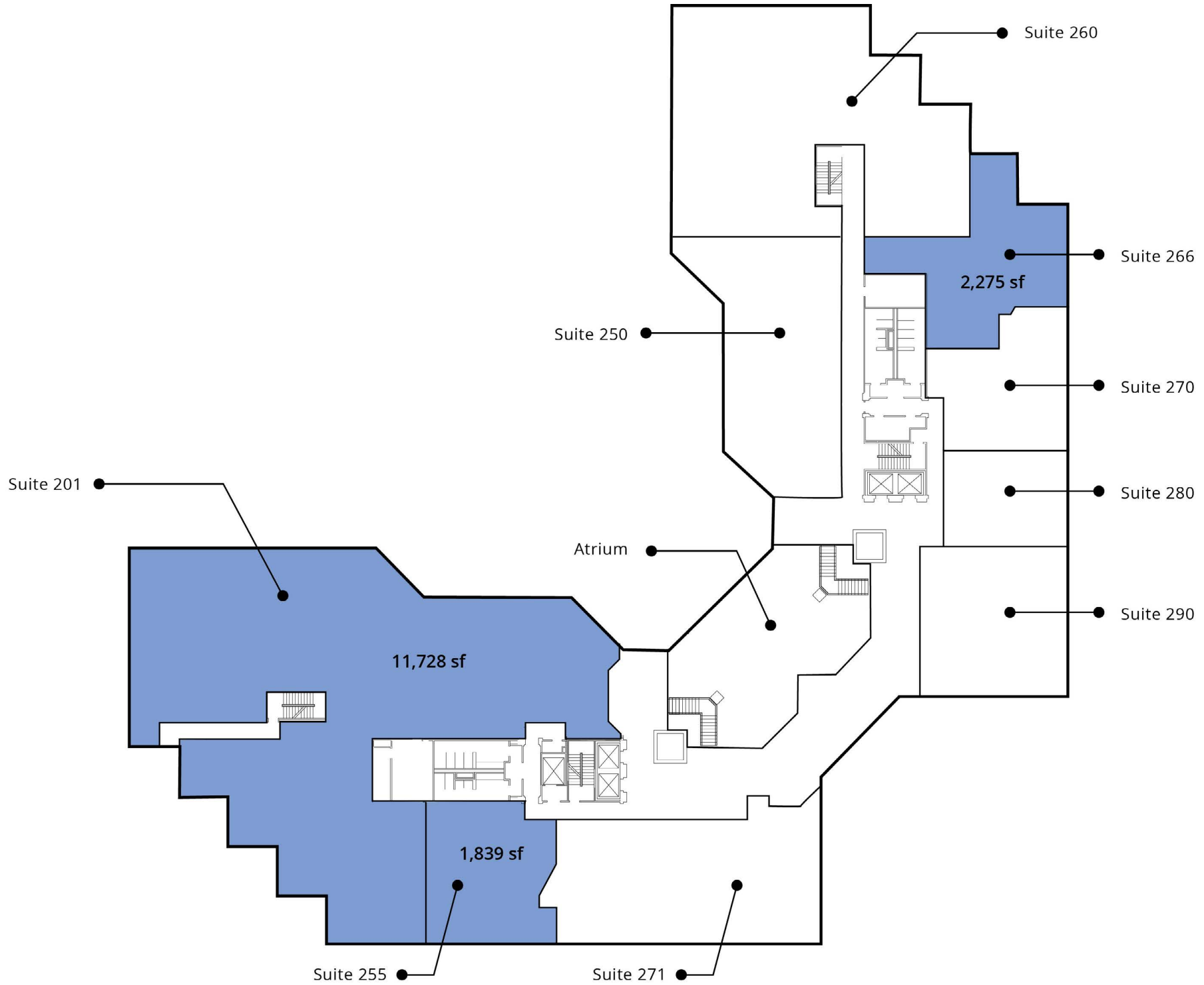
- Adjacent to The Sheraton Hotel
- 0.25 miles to Wegmans
- 3 miles to UNC at Chapel Hill
- 18 miles to Raleigh-Durham International Airport



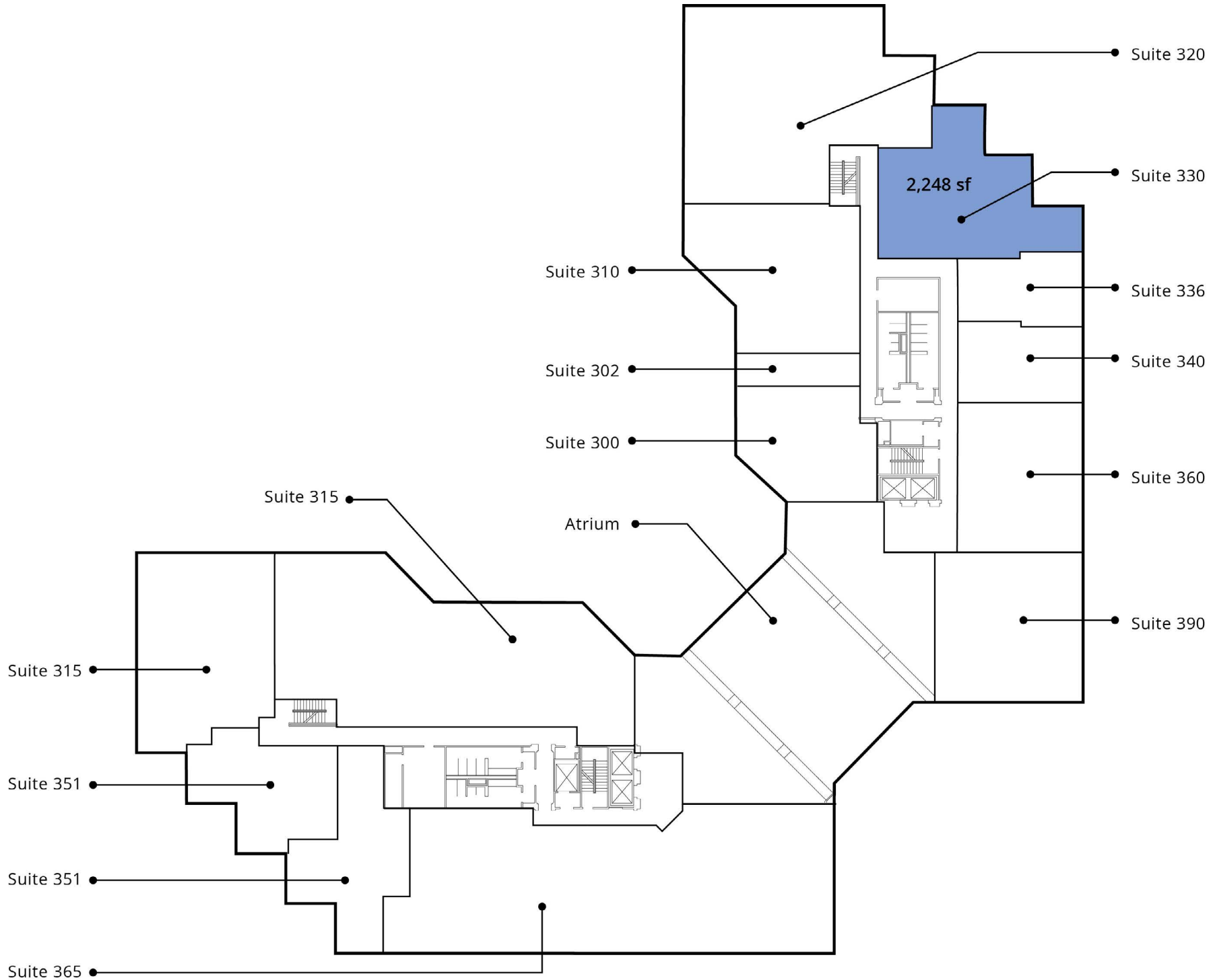
First floor plan



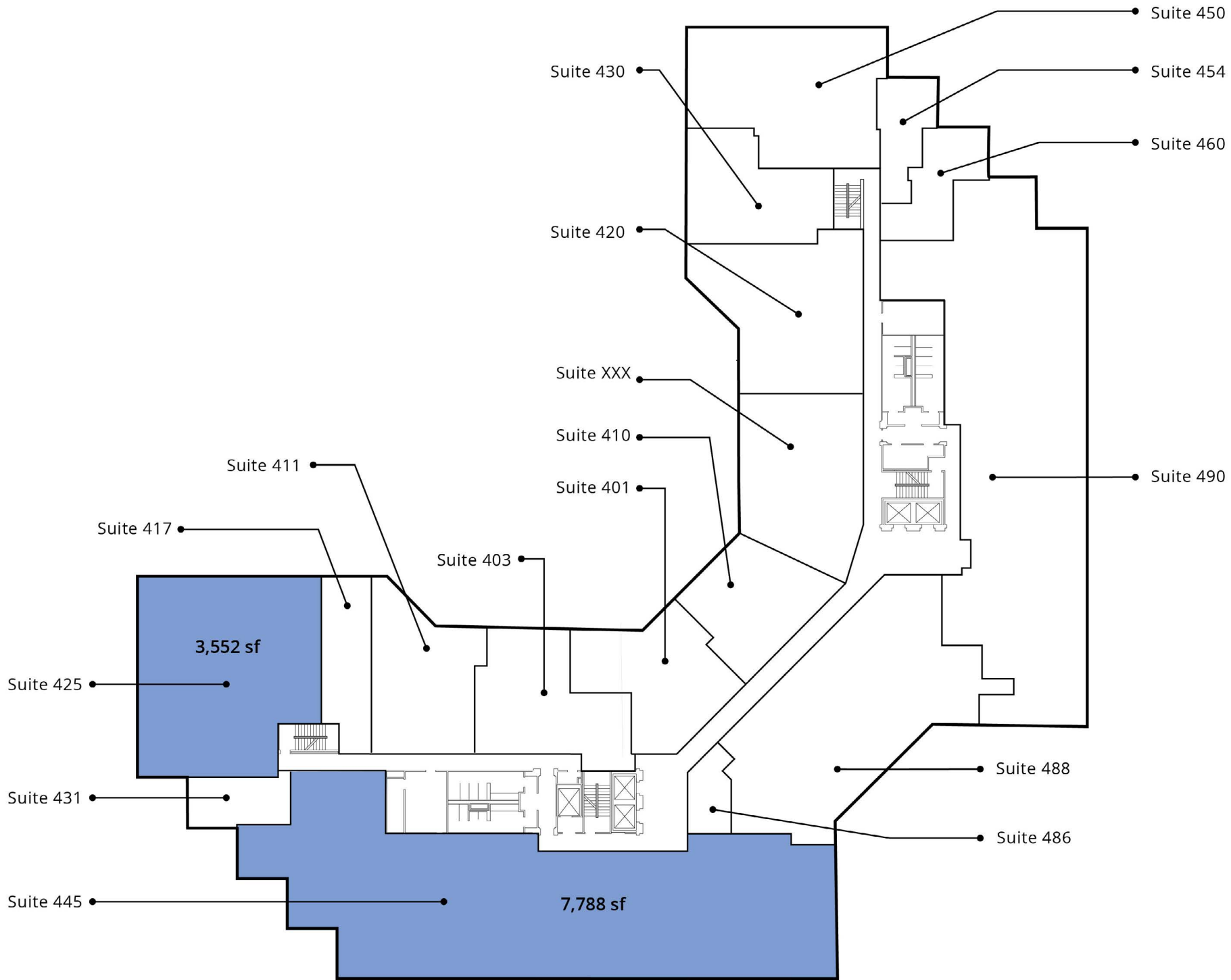
Second floor plan



Third floor plan



Fourth floor plan



**AVISON
YOUNG**



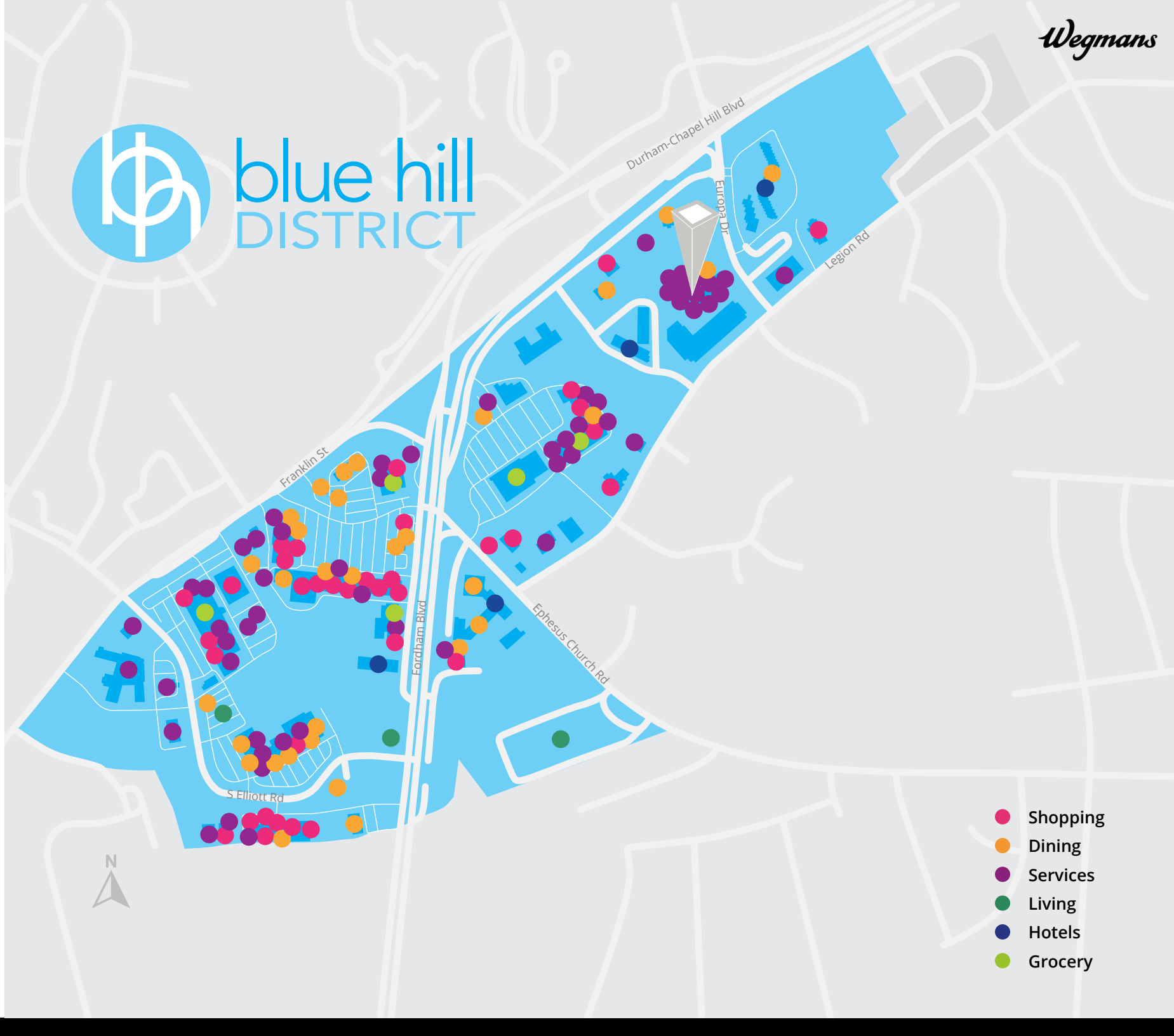
Gallery





blue hill
DISTRICT

Nearby amenities



- Shopping
- Dining
- Services
- Living
- Hotels
- Grocery

Demographics

141,339

Total population
within a five-mile
radius

6,833

Total businesses
within a five-mile
radius

59,121

Total employees
within a five-mile
radius

64,944

Total housing units
within a five-mile
radius

\$153,962

Avg. hh income
within a three-mile
radius

\$580,322

Median home value
within a three-mile
radius



Let's talk.

Gary Hill, CCIM
Senior Associate, Sales & Leasing
D 919 913 1116
gary.hill@avisonyoung.com



EUROPA  CENTER

Avison Young - Raleigh-Durham
5440 Wade Park Boulevard, Suite 200 | Raleigh, NC 27607

© 2026. Avison Young - Raleigh-Durham. Information contained herein was obtained from sources deemed reliable and, while thought to be correct, have not been verified. Avison Young - Raleigh-Durham does not guarantee the accuracy or completeness of the information presented, nor assumes any responsibility or liability for any errors or omissions therein.

**AVISON
YOUNG**
